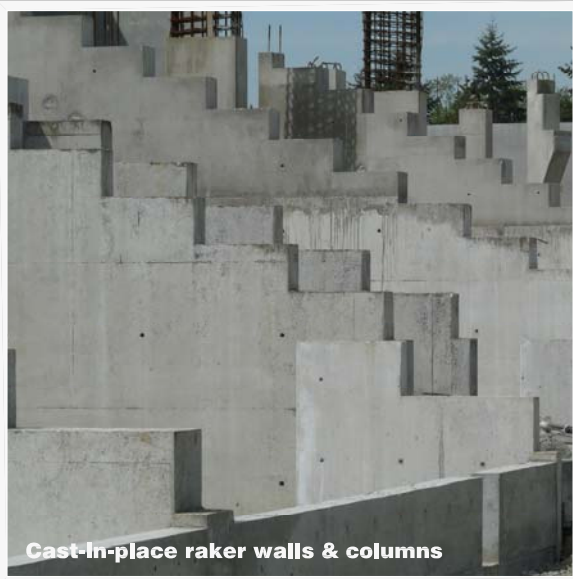


With thanks and congratulations to Langley and Ventana Construction on the grand opening.

Langley Events Centre

Proud to be a part of this great new facility, from the ground on up



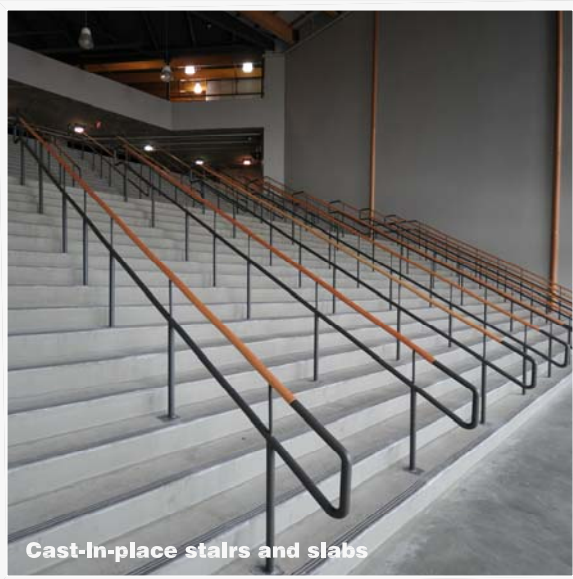
Cast-in-place raker walls & columns



Tilt-up entry panels



Spider-web Glu-lams



Cast-in-place stairs and slabs

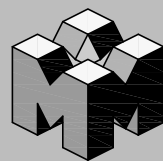


Radial Tilt-up wall.



Entrance area Glu-lams

We have constructed many other concrete buildings from 2-Storey homes to 22-Storey Towers, Multi-level office buildings and base foundation work for steel or wood framed structures. Our hard earned reputation for getting the job done right, with a proactive attitude to addressing and resolving problems before they become issues, allows us to stand proudly behind all our work.



**MARDINA
Construction Ltd**

A reputation cast in concrete since 1977

Please visit our website for contact information, and to see more examples of our work and the services we provide.

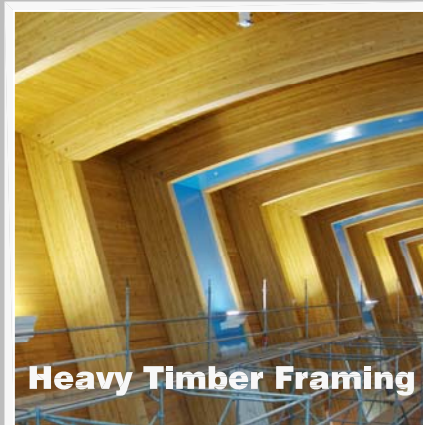
mardina.ca



Cast-in-place Concrete



Crane & Equipment rental



Heavy Timber Framing



Tilt-up Concrete